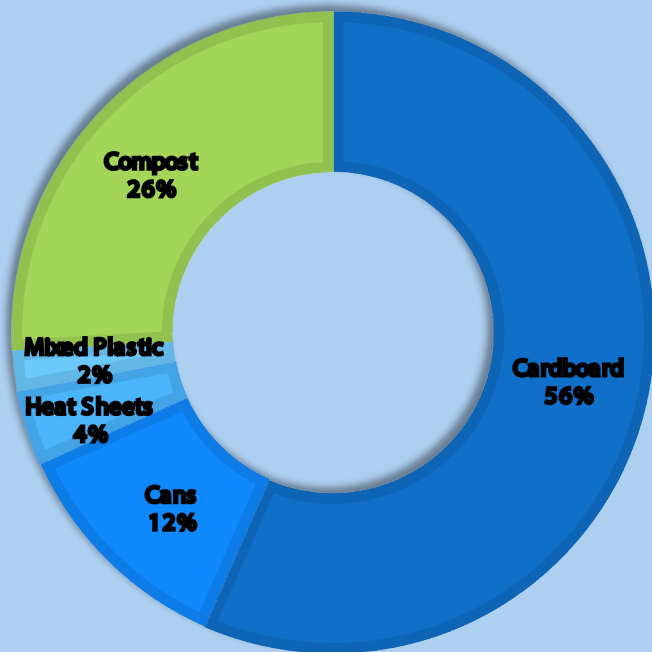





2,575.4 lbs
Diverted from
the landfill

Material Breakdown




 1,909.1 lbs of recycling was collected and sent to
- CW Recycling
- Cullison's Scrap Metal
- Terracycle Recycling

1,457.2 lbs of cardboard

301.5 lbs of cans

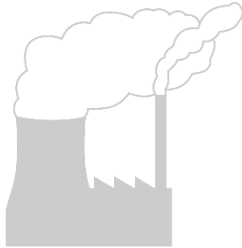
98.1 lbs of heat sheets

52.3 lbs of mixed plastic

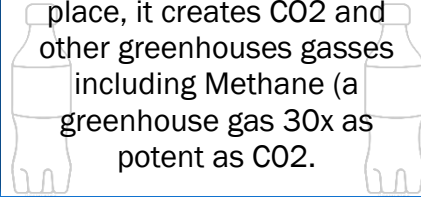
 666.3 lbs of compost was taken to
- Athens-Hocking Organics

CO2 and Volume Estimates

CO2 is a potent greenhouse gas.



When compostable or recyclable materials end up in the landfill, and new materials are made in their place, it creates CO2 and other greenhouse gasses including Methane (a greenhouse gas 30x as potent as CO2).



By recycling and composting at your event, you kept potent greenhouse gasses from entering the atmosphere. This is measured in MTCO2E (Metric Tons of CO2 Equivalent). We've converted that into lbs. below:

CO2 Estimates



1,909.1 total lbs. of recycling were diverted from the landfill

Saving 11,421 lbs. of CO2 equivalent gasses from entering the atmosphere.

Equivalent to: Carbon sequestered by 86 trees grown over 10 years

Or
584 gallons of gasoline

Or
.88 homes' electric use for one year

Or
1.1 passenger cars driven for one year



666.3 total lbs. of compost were diverted from the landfill

Saving 1,153 lbs. of CO2 equivalent gasses from entering the atmosphere.

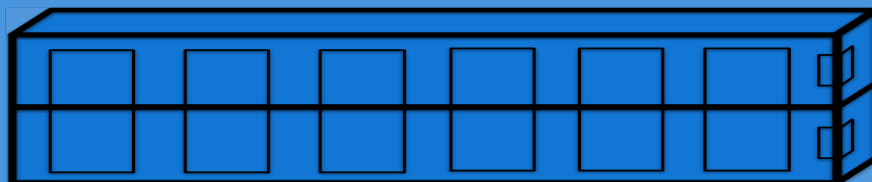
Equivalent to: Carbon sequestered by 13 trees grown over 10 years

Or
59 gallons of gasoline

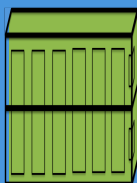
Or
.09 homes' energy use for one year

Or
.11 passenger cars driven for one year

Estimated Volume Diverted from the Landfill



Cubic Yards Recycling
21.6



Cubic Yards Compost
3.2