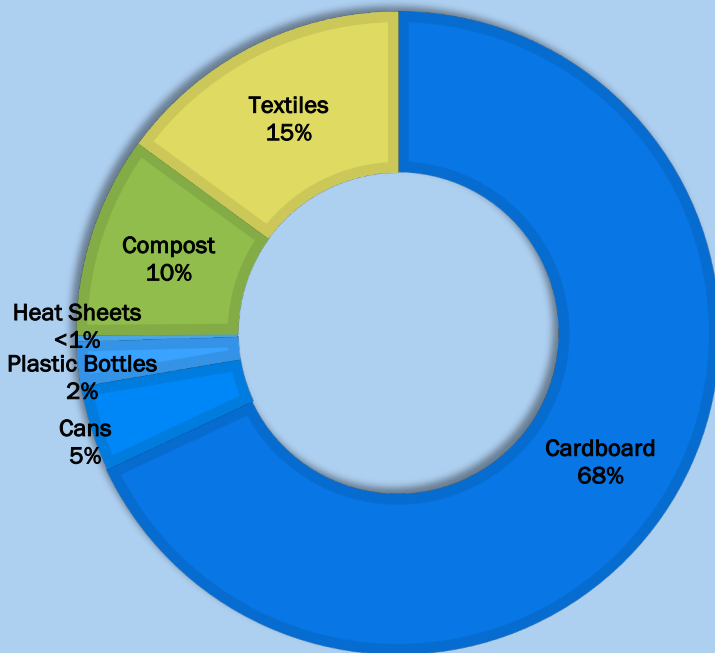




CNO FINANCIAL GROUP
INDIANAPOLIS
MONUMENTAL
MARATHON

6,689 lbs
diverted from
the landfill

Material Breakdown



5,009 lbs of recycling were taken to
- Republic Recycling
- Cullison's Scrap Metal

4,550 lbs of cardboard and cartons

289 lbs of cans

150 lbs of Plastic Bottles

20 lbs of heat sheets



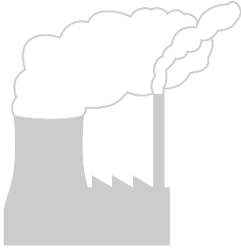
680 lbs of compost were taken to
- Athens-Hocking Organics



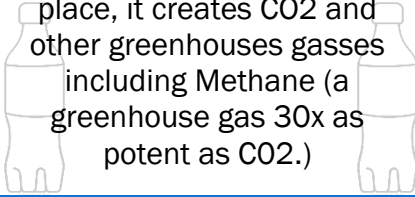
An estimated 1,000 lbs of clothing
were donated

CO2 and Volume Estimates

CO2 is a potent greenhouse gas.



When compostable or recyclable materials end up in the landfill, and new materials are made in their place, it creates CO2 and other greenhouse gases including Methane (a greenhouse gas 30x as potent as CO2.)



By recycling and composting at your event, you kept potent greenhouse gases from entering the atmosphere. This is measured in MTCO2E (Metric Tons of CO2 Equivalent). We've converted that into lbs. below:

CO2 Estimates

5,689 total lbs.

of recycling and compost were diverted from the landfill

Saving 9.2 tons of CO2 equivalent gasses from entering the atmosphere.



Equivalent to:



Carbon sequestered by **153** trees grown over 10 years

Or



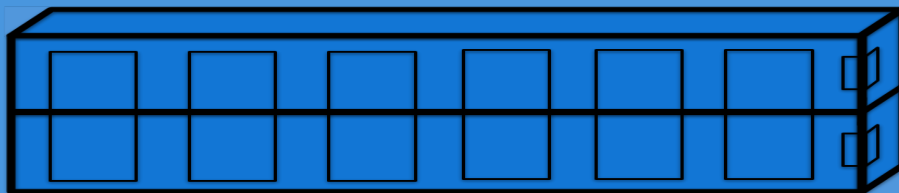
1,032 gallons of gasoline

Or

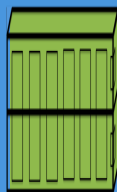


1,116,252 smartphones charged

Estimated Volume Diverted from the Landfill



Cubic Yards
Recycling
40



Cubic Yards
Compost
4.8